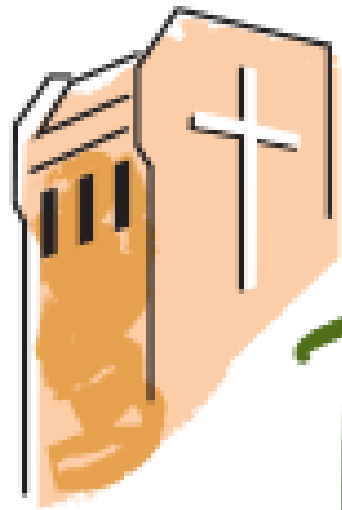


GLENMERE



The
Village
at
Rockville

A National Lutheran Community



ERIN MARTINKO
MANAGING DIRECTOR
WISE MOVES

O: 301/519/8009

C: 301/706/3570



STORE

SELL

GIVE
AWAY

DONATE

AGENDA



The importance of floor planning



Resources for dealing with the remaining contents of your home



The value of working with a senior move manager even during COVID to ensure a smooth transition



FLOOR PLANNING

FLOOR PLANNING

Key considerations

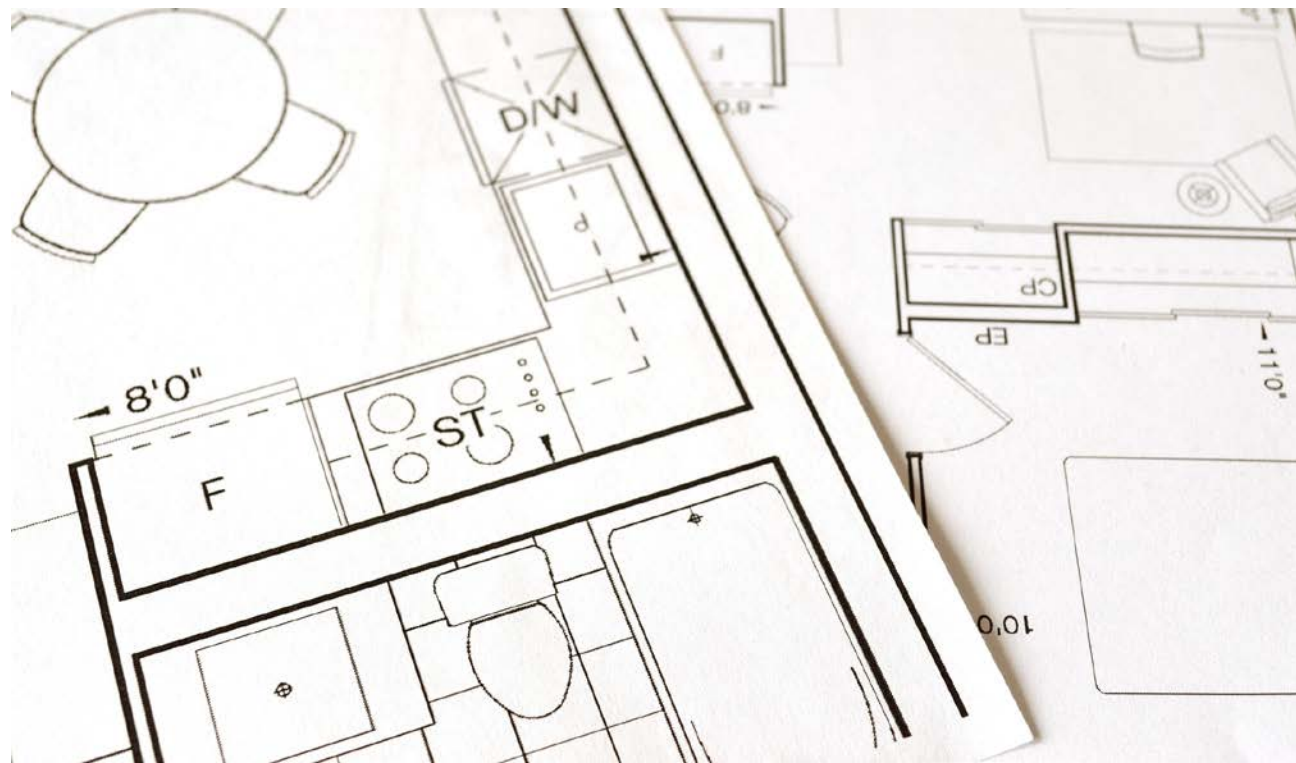
- Length and height of walls
- Placement of windows and doors
- Location of electrical outlets, light switches and cable connections

Questions to ask

- Will there be ample space for drawers and doors to open?
- Will there be enough space to ensure safe walkways?
- Will the rugs anchor the spaces the way you envision?

Ways to streamline

- Utilize to scale architectural drawings of your space





REMAINING CONTENTS

REMAINING CONTENTS

Strategize and categorize!

- Family members and friends
- Liquidation
- Donation
- Shred
- Trash

“What do I do with all the stuff that I’m not taking with me?”

REMAINING CONTENTS: FAMILY AND FRIENDS

- **Be specific and ask directly**
- **Tag the items**
- **Coordinate removal of the items**
- **Know that not everything will find the perfect home (and that's okay!)**



REMAINING CONTENTS: LIQUIDATION

Managing expectations

- Understanding supply and demand

Identifying items of value

- Furniture
- Sterling Silver
- Glassware
- China
- Rugs
- Art
- Coins

Brown Furniture vs Mid-Century Modern

- Baker
- Kittinger
- Henkel Harris
- Widdicomb
- Kindle
- Century
- Henredon





Brands that have value:

- Tiffany
- George Jensen
- Puiforat
- Buccellati

Sterling Silver vs Plate

Glassware & China



China brands that have value:

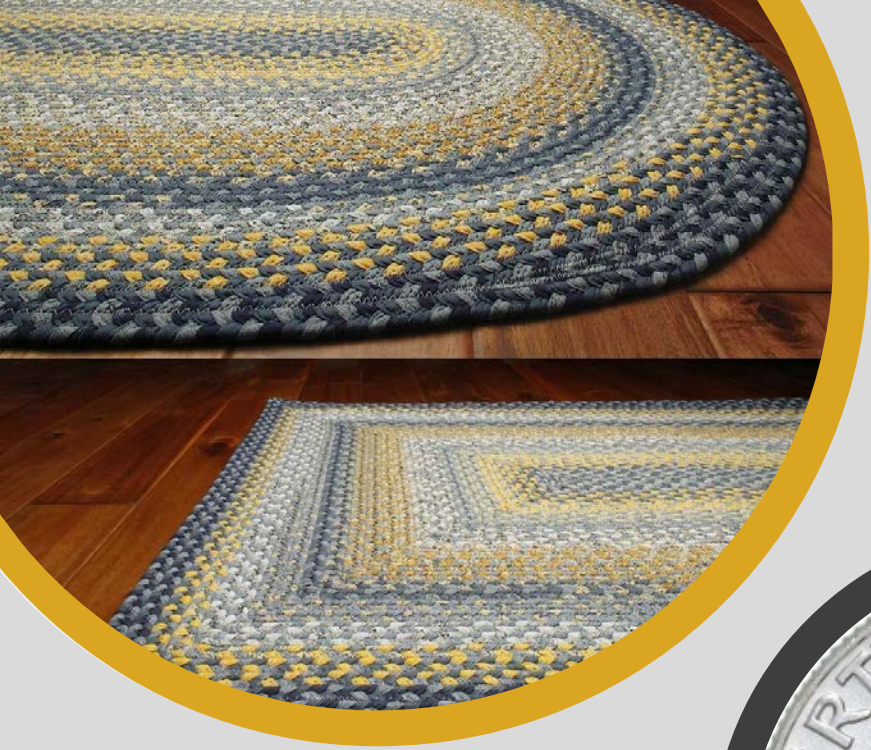
- Meissen (look for crossed swords on the bottom)
- Sevres (look for interlaced L's on the bottom)
- Minton Wedgwood
- Royal Copenhagen
- Crown Derby
- Worcester

Glassware brands that have value:

- Tiffany
- Duran
- Stueben
- Lalique
- St. Louis
- Baccarat



Rugs, Art & Coins



- **Rugs**
 - Antique
 - Vegetable dyed
 - Dense knot count
- **Art**
 - Artprice.com
 - Findartinfo.com
 - Askart.com
- **Coins**
 - 1964 or earlier

REMAINING CONTENTS: DONATION

Habitat for Humanity ReStore

1029 East Gude Drive, Rockville MD 20850
Call to schedule a pick-up: 301 926-4141

A Wider Circle

9159 Brookeville Rd., Silver Spring MD 20910
Phone: 301 608-3504
www.awidercircle.org

Friends of the Library

Randolph Hills Shopping Center
4886 Boiling Brook parkway, Rockville, MD 20852
Phone: 301 984-3300

Interfaith Resource Center

751 Twinbrook Pkwy, Rockville, MD 20852
Phone: 301 424-3796

REMAINING CONTENTS: SHRED

Clean Cut Shredding

14820 Southlawn Ln., Rockville MD 20850

Phone: 301 424-5677

Free shredding service/drop off

Monday - Friday 7am -2 pm

No minimum/no maximum



REMAINING CONTENTS: TRASH



Montgomery County

Phone: 240-777-0311

Hazardous Waste

Shady Grove Transfer Station

16101 Frederick Rd. Derwood, MD 20855

Junk Removal Companies

- 123 Junk
Phone: 800 364-5778
- Eco City Junk
Phone: 301 963-4326



VALUE OF A SENIOR MOVE MANAGER



Wise Moves®
CONCIERGE MOVE MANAGEMENT
AND HOME ORGANIZATION



COVID – 19

Wise Moves Safety Procedures & Protocols

Wise Moves requests our clients adhere to the following safety procedures:

- Inform us of any COVID-19 related symptoms, exposure or concerns
- Wear a mask when working directly with Wise Moves staff
- Maintain social distancing as much as possible
- Establish a designated washroom for staff



COVID – 19

Wise Moves Safety Procedures & Protocols

Wise Moves staff members adhere to the following protocols:

- Take their temperature each morning
- Inform administration if they and/or anyone in their household has cold, cough or fever symptoms. They will not come to work and if advised, will get tested before returning
- Wear masks 100% of the time
- Wash hands periodically with soap & water for at least 20 seconds and change gloves
- Keep 6' social distancing as much as possible
- Practice respiratory etiquette
- No handshaking or hugs
- Before leaving a job, wipe down surfaces, faucets, doorknobs and handrails of use, while being conscientious of the vulnerable surfaces
- Discard gloves and wipes in a lined trash can

GLENMERE

QUESTIONS WELCOMED



A National Lutheran Community



ERIN MARTINKO
MANAGING DIRECTOR
WISE MOVES
emartinko@wisemoves.net
O: 301/519/8009
C: 301/706/3570